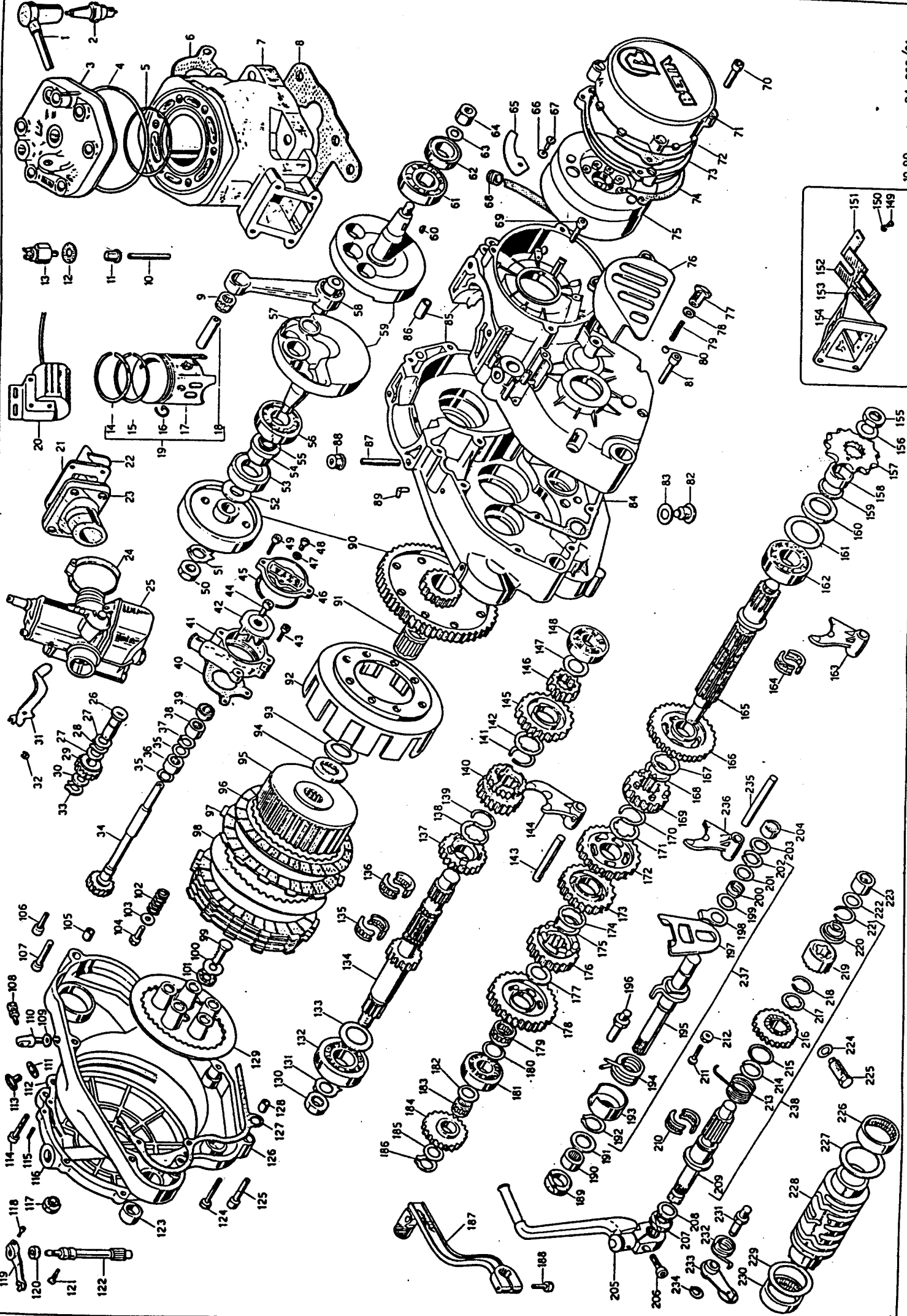


MOTORE ZERO 260/91



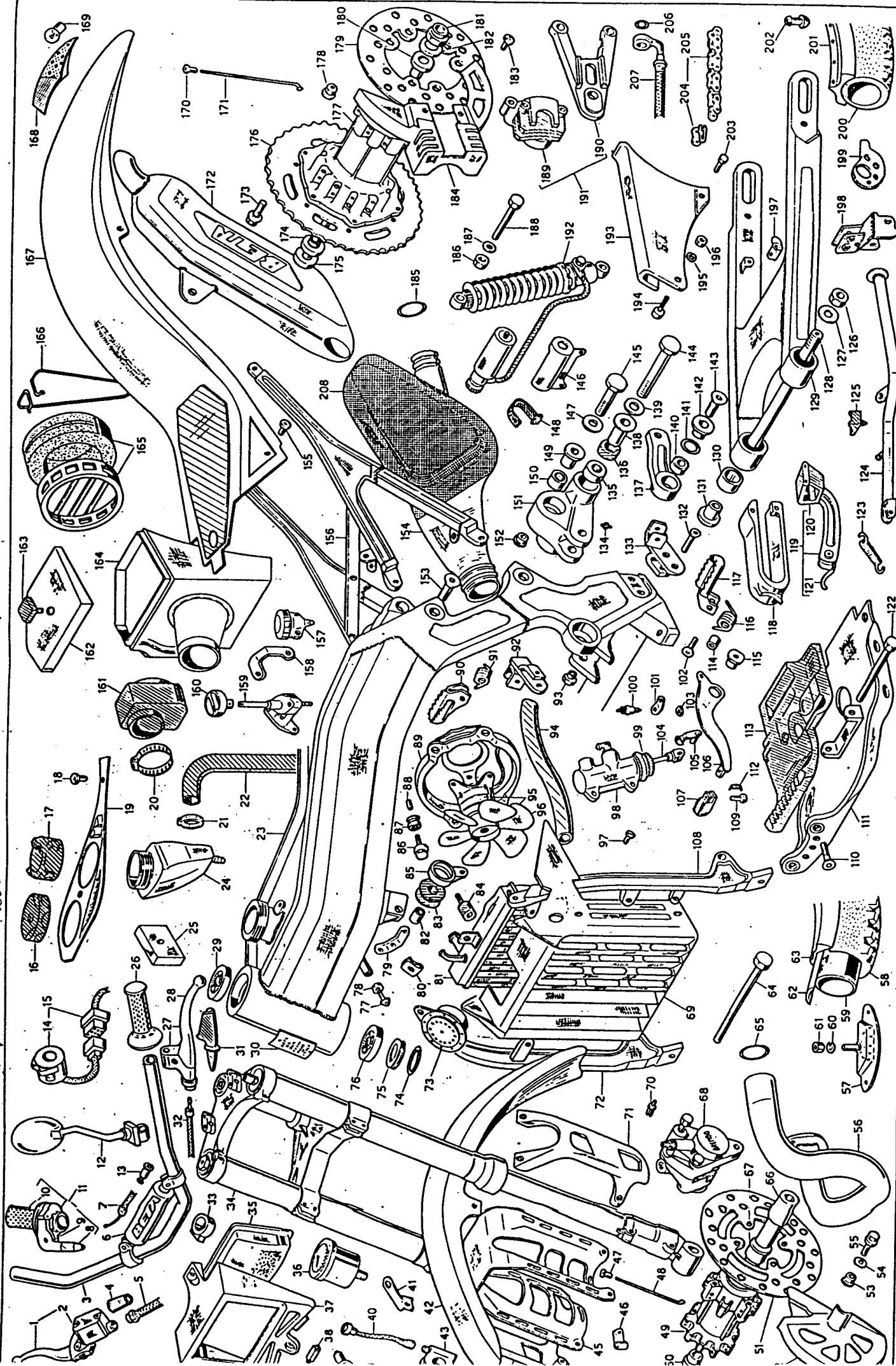
Riga	Articolo	Descrizione
171	27.7387.0.00	SPECIAL WASHER
172	18.5891.8.00	3RD GEAR - LAYSHAFT
173	18.6479.8.00	4TH GEAR - LAYSHAFT
174	27.7387.0.00	SPECIAL WASHER
175	28.2345.0.00	SEEGER 19 SM
176	18.6641.8.00	5TH GEAR - LAYSHAFT
177	27.7256.0.00	WASHER 18.27.0.2
178	18.4307.8.00	1ST GEAR - LAYSHAFT
179	16.1656.0.00	NEEDLE BEARING 18.22.10
180	27.6450.0.00	WASHER 15.25
181	12.9400.0.00	BALL BEARING 15.35.11
182	27.6450.0.00	WASHER 15.25
183	16.1284.0.00	NEEDLE BEARING 15.19.10
184	18.6780.0.00	GEAR
185	27.6450.0.00	WASHER 15.25
186	28.2360.0.00	SEEGER 15E
187	21.2113.0.00	SHIFT LEVER ZERO-91
188	31.3451.0.00	SCREW 6.20
189	10.4800.0.00	OIL SEAL 12.22.5
190	11.2220.0.00	NEEDLE BEARING 12.18.12
191	27.6000.0.00	WASHER 12.22
192	28.2470.0.00	SEEGER 14.1 E
193	28.1595.0.00	SPRING RETAINER
194	22.7200.0.00	SELECTOR SPRING
195	10.1318.0.00	SELECTOR SHAFT 125-76
196	23.4262.0.00	PIN FOR RETURNING SPRING
197	27.7855.0.00	WASHER 18.22
198	27.6000.0.00	WASHER 12.22
199	22.6800.0.00	WASHER 12.22
200	27.6000.0.00	WASHER 12.22
201	28.2875.0.00	SEEGER 12E
202	27.6000.0.00	WASHER 12.22
203	11.2220.0.00	NEEDLE BEARING 12.18.12
204	21.5311.0.00	KICKSTARTER LEVER ZERO
205	31.4851.0.00	SCREW 4.35
206	10.5800.0.00	OIL SEAL 16.24.5
207	27.6750.0.00	WASHER 16.25
208	10.1310.8.00	STARTER SHAFT 125-CR/81
209	16.1657.0.00	NEEDLE BEARING 18.22.10 -2 PCS
210	31.4500.0.00	SCREW 6.30
211	13.1150.0.00	NUT 6.315
212	28.7897.0.00	KICKSTARTER SPRING 125/81
213	28.2345.0.00	SEEGER 19 SM
214	27.7362.0.00	WASHER 20.30.2
215	18.1460.8.00	STARTER GEAR 125-CR/81
216	27.7386.0.00	SPECIAL WASHER
217	28.2345.0.00	SEEGER 19 SM
218	22.1410.8.00	KICKSTARTER SLEEVE 125-CR/81
219	28.2345.0.00	SEEGER 20 SM
220	28.2346.0.00	CONICAL SPRING
221	27.6450.0.00	WASHER 15.25
222	11.2240.0.00	NEEDLE BEARING 15.21.12
223	16.2500.0.00	GASKET 12.16.1.5
224	11.2240.0.00	NEEDLE BEARING 15.21.12
225	11.6500.0.00	SPECIAL BOLT
226	11.2340.0.00	NEEDLE BEARING 30.37.12
227	27.7425.0.00	WASHER 30.38
228	12.1927.0.00	CAM ZERO-91
229	27.7425.0.00	WASHER 30.38
230	11.2340.0.00	NEEDLE BEARING 30.37.12
231	25.5500.0.00	PIN
232	22.3750.0.00	LOCATING SPRING 125-76
233	21.0301.8.00	LOCATING LEVER 250-6V
234	28.2265.0.00	SEEGER BE
235	25.5107.0.00	SELECTOR PIN 10.103.5
236	15.6457.0.00	SELECTOR FORK 34.5 125-76
237	10.1316.0.00	SELECTOR SHAFT 125-76
238	22.0500.8.00	COMPLETE KICKSTARTER 125-81

PARTICOLARI NON FIGURANTI

- 12.0048.0.00 BEARBOX TR-34/CAMP.
- 29.0722.8.00 PRIMARY DRIVE ASSY
- 28.0795.8.00 GASKET SET ZERO
- 28.0697.8.00 KIT OIL SEAL ZERO

Riga	Articolo	Descrizione
86	16.6001.0.00	DOMEL 10.30
87	25.9809.0.00	STUD BOLT 8.50
88	13.1712.0.00	NUT M8
89	27.2338.0.00	BREATHER PIPE HOSE TR-32
90	27.0722.0.00	PRIMARY DRIVE TR-34/CAMP.
91	16.1718.0.00	NEEDLE BEARING 20.26.20
92	12.2075.0.00	CLUTCH HOUSING TR-34/CAMP.
93	27.7363.0.00	WASHER 20.30.0.15
94	27.6587.0.00	WASHER TR-89
95	29.1019.0.00	CLUTCH CENTER TR-89
96	13.4331.0.00	CLUTCH PLATE TR-34/CAMP.
97	13.3819.0.00	CLUTCH PLATE TR-34/CAMP.
98	25.4510.0.00	STEEL PLATE TR-34/CAMP.
99	27.7405.0.00	WASHER
100	16.1136.0.00	NEEDLE BEARING 10.22.2.8
101	22.8504.0.00	CLUTCH SPRING TR-34/R
102	27.5750.0.00	WASHER 6.16.1
103	11.4901.0.00	DOMEL 6.20
104	16.3701.0.00	SCREW 9.15
105	31.4500.0.00	SCREW 6.30
106	27.2701.0.00	CLUTCH ADJUSTER WITH NUT
107	16.4900.0.00	GASKET 8.14.1.5
108	31.4851.0.00	RATCHET
109	23.1301.0.00	GASKET 16.22.5.1
110	16.5340.0.00	EXT. CLUTCH COVER GASKET TR/89
111	16.7155.0.00	OIL PLUG
112	27.1029.0.00	DIL PLUG
113	31.3105.0.00	SCREW 6.15
114	16.3570.0.00	DOHER TR/89
115	12.4624.0.58	EXT. CLUTCH COVER TR-89
116	29.1003.0.00	OIL PLUG ZERO-91
117	31.2680.0.00	SCREW 4.14
118	21.3505.0.00	CLUTCH PIN LEVER
119	10.4380.0.00	OIL SEAL 8.16.7
120	31.8800.0.00	SPECIAL SCREW
121	25.4399.0.00	CLUTCH PIN TR-240
122	11.3103.0.00	SINTERED BUSH 125-81
123	31.4851.0.00	SCREW 6.35
124	31.3501.0.00	SCREW 6.40
125	12.4684.0.58	CLUTCH COVER ZERO-91
126	17.167.0.00	CLUTCH COVER GASKET 125-81
127	16.3701.0.00	DOMEL 9.15
128	12.2957.0.00	PRESSURE PLATE TR-34/CAMP.
129	13.2895.0.00	S/ARM SPECIAL NUT 14.1.25.7
130	27.7476.0.00	WASHER 14
131	12.9900.0.00	BALL BEARING 20.52.15
132	27.7363.0.00	WASHER 20.30.0.5
133	10.2333.8.00	MAIN SHAFT TR-34/CAMP.
134	16.1487.0.00	NEEDLE BEARING 16.21.10 -2 PCS
135	16.1487.0.00	NEEDLE BEARING 16.21.10 -2 PCS
136	18.3849.8.00	5TH GEAR - MAINSHAFT
137	27.7386.0.00	SPECIAL WASHER
138	28.2546.0.00	SEEGER 20 SW
139	28.2546.0.00	SEEGER 20 SW
140	28.2546.0.00	SEEGER 20 SW
141	27.7386.0.00	SPECIAL WASHER
142	25.5106.0.00	SELECTOR PIN 10.97 125/76
143	15.6456.0.00	SELECTOR FORK 28.5 125-76
144	18.3877.8.00	5TH GEAR - MAINSHAFT
145	18.3231.8.00	2ND GEAR - MAINSHAFT
146	27.6450.0.00	WASHER 15.25
147	12.9400.0.00	BALL BEARING 15.35.11
148	31.2302.0.00	SCREW 3.8
149	27.3401.0.00	WASHER 3
150	25.5968.0.00	PETAL FIXING PLATE 4H/PH
151	21.1545.0.00	OUTER PETAL
152	21.1540.0.00	INNER PETAL
153	31.1354.0.00	NEED VALVE TR-32/ED
154	13.2900.0.00	SPECIAL NUT 14.1.25.8.5
155	27.7476.0.00	WASHER 14
156	25.6080.0.00	SPROCKET 10T.200-TR
157	13.5216.0.00	GASKET 20.26.0.5
158	16.5366.0.00	GASKET 20.26.0.5
159	10.6456.0.00	OIL SEAL 23.37.5
160	27.7415.0.00	WASHER 27.45.0.5
161	12.9900.0.00	BALL BEARING 20.52.15
162	15.6455.0.00	SELECTOR FORK 32.5 TR-200/83
163	16.1657.0.00	NEEDLE BEARING 16.22.10 -2 PCS
164	10.2932.8.00	LAYSHAFT TR-32
165	18.5311.8.00	2ND GEAR - LAYSHAFT TR-34
166	27.7387.0.00	SPECIAL WASHER
167	28.2545.0.00	SEEGER 19 SM
168	18.4711.8.00	4TH GEAR - LAYSHAFT TR-34
169	28.2545.0.00	SEEGER 19 SM
170		

Riga	Articolo	Descrizione
1	27.1351.0.00	SPARK PLUG PROTECTOR
2	12.2510.0.00	SPARK PLUG CH 9L N-3
3	29.1218.0.58	CYLINDER HEAD ZERO 260/91
4	10.6729.0.00	OIL SEAL 80.32.56.2.62
5	10.6719.0.00	OIL SEAL 80.42.92.18.1.78
6	16.8070.0.00	GASKET ZERO-91
7	12.5178.0.58	CYLINDER CRANKCASE GASKET ZERO
8	16.6171.0.00	NEEDLE BEARING 18.22.25
9	25.9814.0.00	STUD BOLT 8.57
10	13.1711.0.00	NUT M8
11	16.4950.0.00	GASKET 8.20.1.5
12	27.1196.0.00	THERMOSTAT ZERO
13	28.5817.0.00	PISTON RING D.76 ZERO
14	28.5217.0.00	PISTON RING D.76 ZERO
15	10.4260.0.00	CIRCLIP 18
16	25.8667.0.00	PISTON 76 ZERO
17	28.9410.0.00	PISTON PIN 18.40
18	25.8667.0.00	COMPL. PISTON D.76 ZERO
19	31.0209.0.00	ELECTRONIC H.T. COIL
20	16.2253.0.00	VALVE GASKET 200-TR/RV
21	27.6337.0.00	INLET MANIFOLD TR-34
22	13.1538.0.00	CLAMP 25/45
23	12.0487.0.00	CARBURETOR PHB8 26 ZERO
24	25.5714.0.00	FUEL MIXER DRIVING PIN RX/85
25	27.5850.0.00	WASHER 10.17
26	28.2270.0.00	SEEGER 10E
27	18.8262.0.00	WASHER ZERO-91
28	27.5850.0.00	WASHER 10.17
29	28.2270.0.00	SEEGER 10E
30	21.2750.0.00	LEVER ZERO
31	28.2270.0.00	SEEGER 10E
32	10.2770.0.00	COUNTER SHAFT ZERO
33	27.5850.0.00	WASHER 10.17
34	11.2210.0.00	NEEDLE BEARING 10.14.10
35	28.2270.0.00	SEEGER 10E
36	11.2210.0.00	NEEDLE BEARING 10.14.10
37	10.4452.0.00	OIL SEAL 10.18.5/8
38	16.7386.0.00	PUMP GASKET ZERO
39	12.9196.0.58	PUMP BODY ZERO
40	31.2180.0.00	PUMP FAN 4H/PH
41	31.3001.0.00	SCREW 5.18
42	31.2991.0.00	SCREW 5.12
43	10.6687.0.00	OIL SEAL 34.45.38.61.1.78
44	12.6796.0.58	PUMP COVER ZERO
45	16.4750.0.00	GASKET 6.12.1.5
46	31.8000.0.00	SCREW 8.7
47	31.2991.0.00	SCREW 5.12
48	13.2900.0.00	SPECIAL NUT 14.1.25.8.5
49	27.7476.0.00	WASHER 14
50	22.3197.0.00	SPRING ZERO
51	10.4500.0.00	OIL SEAL 30.52.10
52	13.5514.0.00	SPACER ZERO
53	12.9944.0.00	BALL BEARING 20.24.25.48.2.62
54	10.6643.0.00	OIL SEAL 20.24.25.48.2.62
55	12.9944.0.00	BALL BEARING 25.62.17 NYLON
56	11.0369.8.00	CONNECTING ROD ASSY. TR-32
57	10.0041.0.00	CRANKSHAFT TR-34/CAMP.
58	12.6440.0.00	WOODRUFF KEY 3.37.9.7
59	12.9946.0.00	BALL BEARING 25.62.17 NYLON
60	10.6468.0.00	OIL SEAL 25.40.7
61	27.5775.0.00	SPECIAL WASHER
62	13.2710.0.00	SPECIAL NUT 12.1.25.17
63	25.5805.0.00	PLATE
64	27.3480.0.00	WASHER 4.16
65	31.2680.0.00	SCREW 4.14
66	28.9150.0.00	SILENT BLOCK
67	31.2680.0.00	SCREW 4.14
68	31.3105.0.00	SCREW 6.15
69	12.6969.0.58	MAGNETO COVER ZERO-91
70	18.7511.0.00	MAGNETO COVER GASKET
71	12.6969.0.00	INTERNAL MAGNETO COVER ZERO
72	16.7509.0.00	MAGNETO COVER GASKET TR-125
73	31.0328.0.00	ELECTRIC FLYWHEEL ZERO
74	12.7308.0.58	PISTON COVER ZERO-91
75	11.7200.0.00	HOLLOW BOLT
76	16.5200.0.00	GASKET 12.16.1.5
77	22.4200.0.00	HOLLOW BOLT SPRING
78	31.4351.0.00	SCREW 6.40
79	28.9935.0.00	MAGNETIC PLUG
80	29.0045.0.00	GASKET 16.22.5.1
81	16.5372.0.00	CRANKCASE GASKET 250-RX/85
82	12.0612.0.00	CRANKCASE ZERO



Riga	Articolo	Descrizione
153	31.6399.0.00	SCREW 8.20
154	22.0411.0.00	MUFFLER ZERO
155	31.3071.0.00	SCREW 6.15
156	29.1102.0.00	REAR FRAME ZERO-91
157	28.0510.0.00	BRAKE OIL TANK TR-34/R
158	28.9725.0.00	OIL TANK BRACKET ZERO
159	27.8104.0.00	PETCOCK SWITCH ZERO
160	25.8852.0.53	PETCOCK SWITCH ZERO -RED-
161	22.1333.0.00	RUBBER SLEEVE ZERO
162	12.7318.0.52	FILTER COVER ZERO-91
163	16.2954.0.00	GROMMET
164	28.1269.0.52	AIR FILTER ZERO-91
165	15.2600.0.00	AIR FILTER ASSY. TR-34
166	22.3250.0.00	SPRING FOR FILTER B4
167	25.1954.0.52	REAR FENDER ZERO-91
168	15.0182.0.00	REAR LIGHT
169	21.1532.0.00	WARNING LIGHT BULB 12V-4W
170	23.1001.0.00	SPECIAL NIPPLES ZERO
171	27.2492.0.00	REAR SPOKE ZERO
172	28.9201.0.00	SILENCER ZERO-91
173	11.5451.0.00	BOLT 8.20
174	13.8556.0.00	RH REAR HUB SPACER ZERO-91
175	25.5492.0.00	REAR WHEEL AXLE ZERO
176	12.8935.0.00	REAR SPROCKET 2.43 5/8.1/4 ZERO
177	22.0794.0.53	REAR HUB ZERO
178	13.1713.0.00	NUT M8
179	13.3943.0.00	REAR BRAKE DISK TR-89
180	13.8557.0.00	LH REAR HUB SPACER ZERO-91
181	27.7121.0.00	REAR WHEEL NUT 16.1,25
182	31.3008.0.00	SCREW 5.10
183	12.8827.0.52	REAR DISK BRAKE COVER ZERO-91
184	10.6468.0.00	OIL SEAL 26.25.39.49.2,62
185	13.1901.0.00	SELF-BLOCKING NUT 10
187	27.5400.0.00	WASHER 10.22
188	11.6370.0.00	BOLT 10.65
189	25.0312.0.00	REAR BRAKE PLIERS TR-34/CAMP.
190	25.5733.0.00	PLATE
191	25.5000.0.00	PLATE
192	10.6407.0.00	SHOCK ABSORBER 1.300 ZERO
193	12.8486.0.58	CHAINGUARD ZERO-91
194	31.4851.0.00	SCREW 6.35
195	27.4200.0.00	WASHER 6.18
196	13.1301.0.00	WASHER 6.18
197	15.1430.0.00	CLAMP
198	28.9856.0.57	STAND BRACKET ZERO-91
199	29.1186.0.00	CHAIN TENSIONER TR-34/R
200	12.8149.0.00	TIRE 4.00.18 TUBELESS
201	12.4276.0.00	RIM 2.13.18 TUBELESS
202	31.1000.0.00	TUBELESS VALVE TR-34
203	11.4801.0.00	BOLT 8.16
204	22.1122.0.00	CONNECTING LINK 5/8.1/4
205	12.0674.0.00	CHAIN 5/8.1/4 P.100 ZERO
206	16.5051.0.00	GASKET 10.15.1 COPPER
207	29.0934.0.00	REAR BRAKE HOSE ZERO
208	12.8840.0.00	MUFFLER COVER ZERO-91
209	11.0560.0.00	TOOL BAG 250/350 GS
210	12.4303.0.00	SPARK PLUG KEY TR-240
211	12.4354.0.00	SCREW DRIVE TRIAL
212	13.3274.0.00	SWINGING ARM SPONSOR DECALS ZERO
213	13.3289.0.00	FRONT FENDER DECALS ZERO-91
214	13.3284.0.00	REAR FENDER DECALS ZERO-91
215	13.3284.0.00	REAR FENDER DECALS ZERO-91
216	27.0222.0.00	FRONT WHEEL ZERO
217	27.0447.0.00	REAR WHEEL ZERO

PARTICOLARI NON FIGURANTI

Riga	Articolo	Descrizione
77	31.6399.0.00	SCREW 8.25
78	13.1700.0.00	NUT 8.8
79	28.9726.0.00	HORN BRACKET ZERO
80	25.5806.0.00	FIXING PLATE
81	27.2344.0.00	RADIATOR ZERO-91
82	13.5433.0.00	SPACER
83	28.9191.0.00	SILENT BLOCK
84	28.9183.0.00	SILENT BLOCK ZERO
85	11.1966.0.00	CONNECTING ROD ZERO-91
86	11.4905.0.00	BOLT 6.20
87	28.9150.0.00	SILENT BLOCK
88	11.2850.0.00	FENDER BUSH
89	28.9801.0.52	ELECTRIC FAN BRACKET ZERO
90	25.3300.0.00	R/H FOOTREST TR-33
91	22.6601.0.00	FOOTREST SPRING
92	28.9923.0.00	RH FOOTREST BRACKET ZERO
93	11.2640.0.00	BUSH ZERO
94	29.1543.0.00	RADIATOR TUBE ZERO
95	14.0101.0.00	COMPL. ELECTRIC FAN ZERO-91
96	31.2153.0.00	FAN ZERO
97	31.2981.0.00	SCREW 5.12
98	25.9116.0.00	REAR BRAKE PUMP TR-34/CAMP.
99	16.3392.0.00	GROMMET FOR 25.9116
100	18.8700.0.00	STOP SWITCH TR-33
101	28.9526.0.00	SWITCH STOP BRACKET ZERO
102	11.5570.0.00	BOLT 8.45
103	13.2182.0.00	NUT
104	10.8401.0.00	REAR BRAKE ROD ZERO
105	28.9313.0.00	PUMP PIN W/SPRING
106	25.2805.0.00	BRAKE PEDAL
107	22.7005.0.00	FOOTREST HUB
108	29.1118.0.00	LH FRONT FRAME ZERO-91
109	25.5445.0.00	BRAKE PEDAL PIN TR-34
110	31.6394.0.00	SCREW 8.25
111	12.3213.0.00	BUMPER ZERO
112	22.6209.0.00	RET. BRAKE PEDAL SPRING B4
113	16.2331.0.00	BUMPER RUBBER
114	13.6553.0.00	SPACER B.12.17
115	11.2661.0.00	BRAKE LEVER BUSH ZERO
116	22.6202.0.00	FOOTREST SPRING
117	25.3305.0.00	L/H FOOTREST TR-33
118	29.1008.0.58	SLIDING BLOCK ZERO-91
119	25.2595.0.00	SLIDING BLOCK TR-34
120	16.2250.0.00	CHAIN TENS. BLOCK TR 34
121	22.8111.0.00	SPRING
122	11.5797.0.00	BOLT 8.140
123	22.4700.0.00	RETURNING STAND SPRING 125-RX
124	12.3993.0.57	STAND ZERO-91
125	14.2949.0.00	GROMMET
126	13.2950.0.00	S/ARM SPECIAL NUT 16.1,25
127	27.5630.0.00	WASHER 16
128	10.8146.0.00	S/ARM AXLE TR-34/R
129	15.4956.0.00	SWINGING ARM ZERO-91
130	11.2300.0.00	S/ARM NEEDLE BEARING 25.28.18
131	13.4920.0.00	SPACER TR-34
132	31.6394.0.00	SCREW 8.25
133	28.9924.0.00	LH FOOTREST BRACKET ZERO
134	18.8351.0.00	GREASE NIPLLE
135	11.2250.0.00	NEEDLE BEARING 15.21.22
136	10.5400.0.00	OIL SEAL 15.24.5
137	11.1973.0.00	CONNECTING ROD ZERO
138	13.4770.0.00	SPACER 10.15/26.42.5
139	27.5400.0.00	WASHER 10.22
140	28.9312.0.00	SPHERIC ARTICUL 14.28.13.5/19
141	10.6645.0.00	OIL SEAL 20.63.25.67.2,62
142	11.2884.0.00	BUSH
143	31.6397.0.00	SCREW 8.40
144	11.6390.0.00	BOLT 10.120
145	11.6374.0.00	BOLT 10.85
146	28.9911.0.00	SHOCK ABSORBER TANK BRACKET ZERO
147	27.5400.0.00	WASHER 10.22
148	14.4003.0.00	ELASTIC RUBBER TR-34/CAMP.
149	13.4740.0.00	SPACER 10.20/26.19,5
150	11.2285.0.00	NEEDLE BEARING 20.26.12
151	11.2038.0.00	CONNECTING ARM ZERO-91
152	11.2727.0.00	BUSH

Riga	Articolo	Descrizione
1	20.0300.0.00	FRONT BRAKE LEVER KIT
2	21.0229.0.00	FRONT BRAKE LEVER TR-32 FD
3	22.2045.0.00	HANDLEBAR ZERO-91
4	16.3403.0.00	GROMMET
5	29.0918.0.00	FRONT BRAKE HOSE ZERO
6	16.2359.0.00	HANDLEBAR RUBBER ZERO-91
7	29.1339.0.00	THROTTLE CABLE ZERO
8	20.0322.0.00	THROTTLE KIT
9	12.5376.0.00	THIST GRIP COVER TR-34
10	22.1860.0.00	GRIP D.24 TRIAL
11	12.5509.0.00	THIST GRIP
12	28.9292.0.00	REAR VIEW MIRROR TRIAL
13	16.3388.0.00	GROMMET
14	13.3464.0.00	SWITCH TR
15	19.0132.0.00	ELECTRIC EQUIPMENT ZERO
16	29.1051.0.00	TANK PLUG TRIAL
17	29.0140.0.00	RADIATOR CAP FOUR
18	31.3071.0.00	SCREW 6.15
19	12.8901.0.52	TANK COVER ZERO-91 -BLACK-
20	15.1530.0.00	CLAMP 48/68
21	15.1524.0.00	CLAMP 15/24
22	29.1173.0.00	UPPER RADIATOR TUBE ZERO-91
23	29.1116.0.00	FRONT FRAME ZERO-91
24	28.8583.0.00	LIQUID TANK ZERO-91
25	27.8801.0.00	MOTOPLAT REGULATOR-12
26	22.1801.0.00	GROMMET
27	21.0239.0.00	CLUTCH LEVER TR-34
28	21.2700.0.00	CLUTCH LEVER ONLY TR-33
29	18.9830.0.00	CONICAL BEARING 20.42.15
30	25.5747.0.00	PLATE
31	14.3384.0.00	GROMMET
32	29.1483.0.00	CLUTCH CABLE ZERO
33	25.2522.0.52	CLUTCH
34	15.0794.0.00	REVERSE FORK ZERO-91
35	16.4703.0.00	OTTICAL GROUP ZERO
36	12.0936.0.00	SPEEDOMETER TR-33
37	22.2266.0.52	HEADLIGHT HOLDER ZERO-91
38	21.1557.0.00	BULB 12V-10W
39	21.1364.0.00	BULB 12V-25/25W ZERO
40	29.2851.0.00	SPEEDOMETER CABLE ZERO
41	28.9723.0.00	SPEEDO-METER CONTACT ZERO
42	25.1517.0.52	FRONT FENDER ZERO-91
43	27.3246.0.00	SPEEDO-DRIVE ZERO
44	25.9893.0.52	RH FORK TUBE PROTECTION ZERO-91
45	28.9838.0.00	FENDER BRACKET ZERO
46	15.1460.0.00	CLIP W.RUBBER 10X15
47	23.1010.0.00	NIPPLES D.3
48	27.2418.0.00	FRONT SPOKE ZERO
49	22.0714.0.53	FRONT HUB ZERO
50	13.8556.0.00	RH REAR HUB SPACER ZERO-91
51	13.3941.0.00	FRONT BRAKE DISK ZERO
52	12.8826.0.52	FRONT DISK BRAKE COVER ZERO-91
53	13.6200.0.00	00
54	22.3198.0.00	CUP SPRING TR-89
55	31.3078.0.00	SCREW 6.20
56	29.1628.0.00	EXHAUST PIPE ZERO
57	15.1750.0.00	TIRE FASTENER
58	12.7940.0.00	TIRE 2.75.21 TR-125
59	12.1641.0.00	TIRE 2.75.21 MICHELIN
60	27.4800.0.00	WASHER 8
61	13.1700.0.00	NUT 8.8
62	15.3860.0.00	BEAD 21.25
63	12.4247.0.00	FRONT RIM ZERO
64	11.5797.0.00	BOLT 8.140
65	10.6710.0.00	OIL SEAL 52.07.57.31.2,62
66	25.5691.0.00	FRONT WHEEL AXLE ZERO
67	13.8537.0.00	LH REAR HUB SPACER ZERO-91
68	25.0311.0.00	FRONT BRAKE PLIERS TR-89
69	15.2350.0.52	RADIATOR COVER ZERO-91
70	12.4450.0.00	EXPANDER RIVET
71	25.9894.0.52	LH FORK TUBE PROTECTION ZERO-91
72	29.1117.0.00	RH FRONT FRAME ZERO-91
73	10.0980.0.00	HORN TR-33
74	10.6686.0.00	OIL SEAL 34.60.39.84.2,62
75	10.6739.0.00	F/FORK ALUMINIUM RING
76	12.9830.0.00	CONICAL BEARING 20.42.15